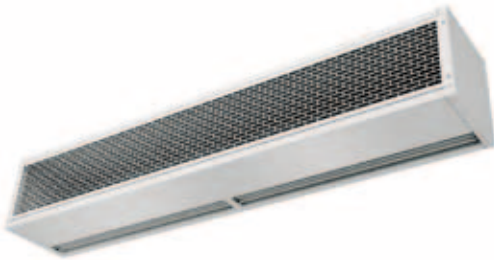




Characteristics

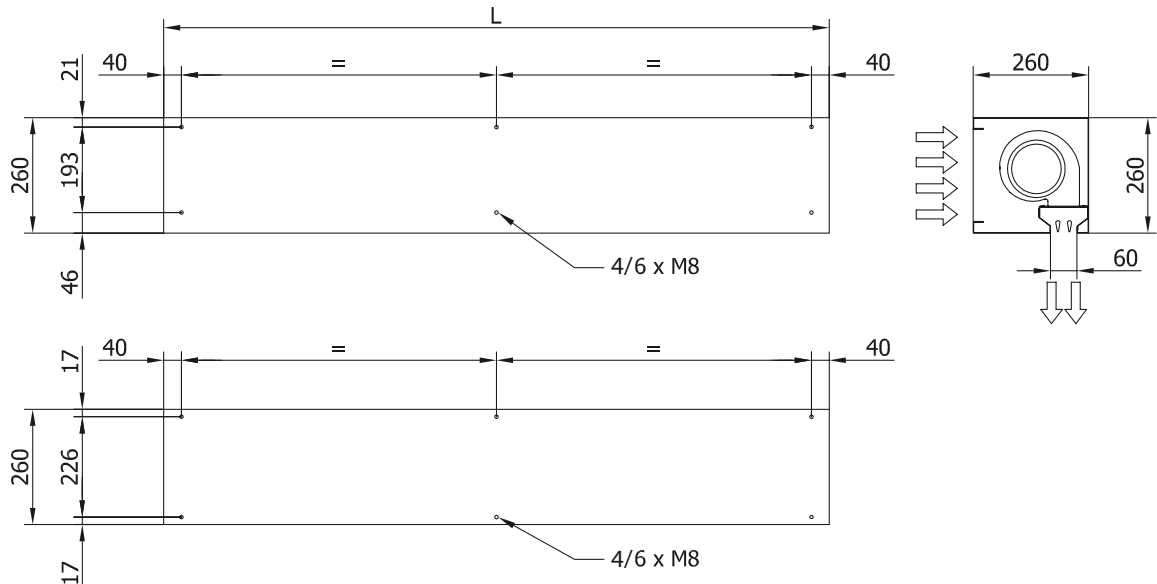


- High pressure and small dimensions air curtains.
- Self-supporting casing construction made of zinc plated steel, finished in structural epoxy-polyester RAL 9016 as standard. Other colours or stainless steel construction are available on request.
- Low noise centrifugal double inlet fans driven by an external rotor motor with built in thermal protection contact. Provided with five speed selection.
- Perforated inlet grille with large absorbing surface to minimize the air pressure drop. It doesn't need filter.
- Anodised aluminium blow-out vanes, airfoil shaped, pitch angle adjustable each side.
- All models are without heating, air only.
- Control panel and 20m of telephonic cable with fast connectors type RJ45 (Plug & Play), included. Optional: Interface to connect to BMS.

Specifications

Model	Airflow m3/h	Without heating Air only	Fans power 230V-50Hz kW	Fans current 230V-50Hz A	Noise level (5 m) dB(A)	Weight kg
COM 1000	1860	-	0,62	3,30	52	21
COM 1500	2480	-	0,83	4,40	53	32
COM 2000	3720	-	1,24	6,60	54	43
COM 2500	4340	-	1,45	7,70	55	55

Dimensions



	L
COM 1000	1000
COM 1500	1500
COM 2000	2000
COM 2500	2500

